

## STAGE 2 DEVELOPMENT ASSESSMENT

# JOHN H. WILSON ELEMENTARY SCHOOL 4945 KILAUEA AVENUE, HONOLULU, OAHU, HI 96816



Description	Estimated Area (m <sup>2</sup> )	Scaling Factor	Useable Area (m <sup>2</sup> )	# of Panels	Panel Watts	Total (kW)
<b>Roof</b>	6372	80%	5097.6	2835	240	680
<b>Parking</b>	3884	50%	1942.0	1080	265	286
<b>TOTAL SYSTEM SIZE</b>						<b>967 kW</b>

Buildings are outlined in **RED**. Parking lots are outlined in **BLUE**.

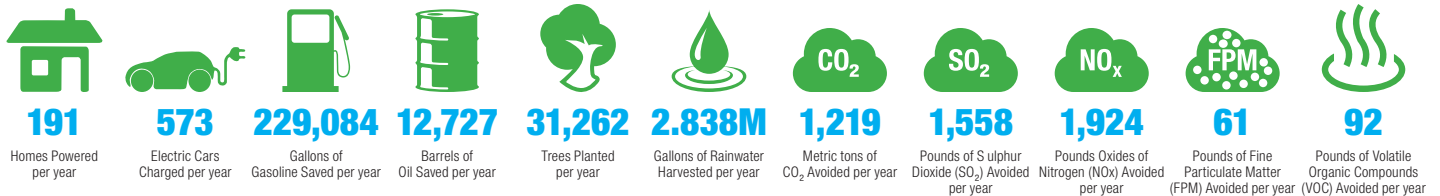
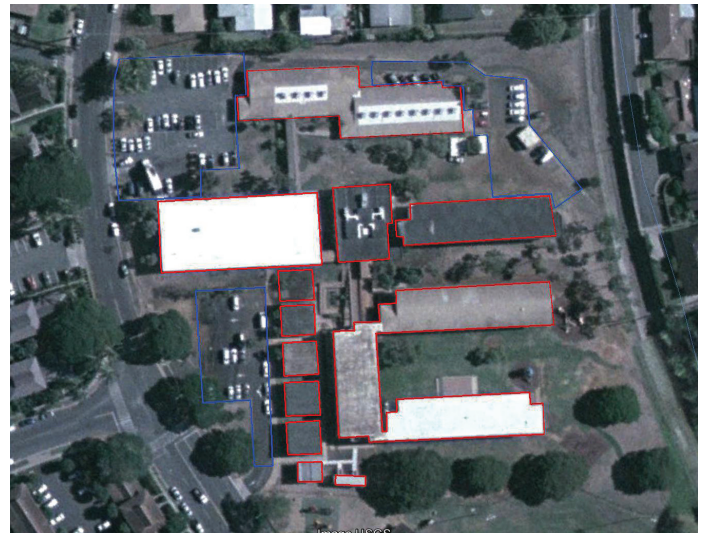
### PROJECT SUMMARY

John H. Wilson Elementary is a north-east Honolulu primary school, lying in the Waialae Nui Valley at the foot of the Koolau Mountain Range. It serves children from the north-east of Kaimuki area, but as much as 75% of its intake comes from outside catchment, as 'geographic exception' entrants. The school's intake, across grades, is over 550 students. They are taught by 32 teachers, who look after their primary education from Kindergarten to Fifth Grade.

The school prides itself on educating the 'whole child', with a strong emphasis on visual and performing arts, as well as academic rigor. The school was founded on its current site in 1961, and has expanded steadily since. Recently, it has downgraded to a K-5 school, from K-6.

With the available roof-space from the school's building facilities and car parking, the school could harvest **2,837,772 gallons of rainwater** per year, with an overall solar system size for the site estimated at **967 kW**.

This would generate **1,527,228 kWh** of clean solar energy annually, with a net value of **\$335,990**. This energy generated on-site would be equivalent to having:



## WAIKIKI AHUPUA'A

### CONTACT US

Contact.Us@rpdelio.com  
855 RPDELIO  
(855) 773-3546

### SOUTH PACIFIC MAILING ADDRESS

1050 Bishop Street  
Suite 351  
Honolulu, Hawaii, USA 96813

### NORTHEAST USA MAILING ADDRESS

9 Reservoir Street  
Bethel, CT 06801

