

# STAGE 2 DEVELOPMENT ASSESSMENT

## PALOLO ELEMENTARY SCHOOL 3710 LEAHI AVENUE, HONOLULU, OAHU, HI 96815



Description	Estimated Area (m²)	Scaling Factor	Useable Area (m²)	# of Panels	Panel Watts	Total (kW)
<b>Roof</b>	7599	80%	6079.2	3380	240	811
<b>Parking</b>	1640	50%	820.0	456	265	121
<b>TOTAL SYSTEM SIZE</b>						<b>932 kW</b>

Buildings are outlined in **RED**. Parking lots are outlined in **BLUE**.

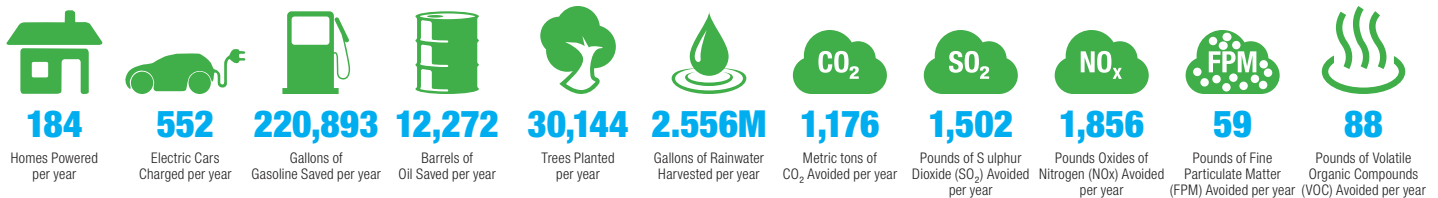
### PROJECT SUMMARY

Palolo Elementary is a Honolulu primary school located in the north-eastern fringes of the city, close to the foothills of the Palolo Mountains. It serves the northern parts of the Kaimuki community, and has a head count of approximately 270 students. These are taught by 20 teachers, who cater for their primary education from Kindergarten to Fifth Grade.

The student population has been declining recently, with the current site originally planned to cater for 700 students. The school was first established on this site in 1921; these buildings were converted from a pre-existing military barracks. The school's library was later created from the merger of three of its old classrooms.

With the available roof-space from the school's building facilities and car parking, the school could harvest **2,556,374 gallons of rainwater** per year, with an overall solar system size for the site estimated at **932 kW**.

This would generate **1,472,623 kWh** of clean solar energy annually, with a net value of **\$323,977**. This energy generated on-site would be equivalent to having:



## WAIKIKI AHUPUA'A

### CONTACT US

Contact.Us@rpdelio.com  
855 RPDELIO  
(855) 773-3546

### SOUTH PACIFIC MAILING ADDRESS

1050 Bishop Street  
Suite 351  
Honolulu, Hawaii, USA 96813

### NORTHEAST USA MAILING ADDRESS

9 Reservoir Street  
Bethel, CT 06801

