

STAGE 2 DEVELOPMENT ASSESSMENT

NAALEHU ELEMENTARY SCHOOL 95-5545 MAMALAHOA HIGHWAY, NAALEHU, HAWAII, HI 96772



Description	Estimated Area (m ²)	Scaling Factor	Useable Area (m ²)	# of Panels	Panel Watts	Total (kW)
Roof	2770	80%	2216.0	1233	240	296
Parking	1811	50%	905.5	504	265	134
TOTAL SYSTEM SIZE						429 kW

Buildings are outlined in **RED**. Parking lots are outlined in **BLUE**.

PROJECT SUMMARY

Naalehu Elementary School lies on the outskirts of Naalehu proper, a town located in the south east of the Big Island. The school has a head count of around 400 students, with its 28 teachers looking to the primary educational needs of children from pre-Kindergarten, all the way to Grade 6.

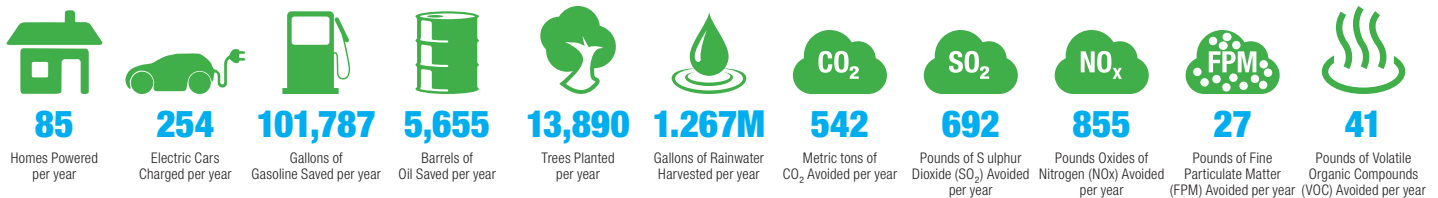
The student population is largely Hawaiian and Caucasian, but has a growing Marshallese contingent; this Micronesian language is now widely used in school communications. The school itself was first established in 1928, but only shifted to being an Elementary-only site in 2010. It is noted as the southernmost school in the United States.

With the available roof-space from the school's building facilities and car parking, the school could harvest **1,267,534 gallons of rainwater** per year, with an overall solar system size for the site estimated at **429 kW**.

This would generate **678,578 kWh** of clean solar energy annually, with a net value of **\$149,287**. This energy generated on-site would be equivalent to having:



Image © 2012 DigitalGlobe



KAMILO AHUPUA'A

CONTACT US

Contact.Us@rpdelio.com
855 RPDELIO
(855) 773-3546

SOUTH PACIFIC MAILING ADDRESS

1050 Bishop Street
Suite 351
Honolulu, Hawaii, USA 96813

NORTHEAST USA MAILING ADDRESS

9 Reservoir Street
Bethel, CT 06801

