

STAGE 2 DEVELOPMENT ASSESSMENT

PRINCE JONAH KUHIO ELEMENTARY SCHOOL 2759 SOUTH KING STREET HONOLULU, OAHU, HAWAII 96826



Description	Estimated Area (m ²)	Scaling Factor	Useable Area (m ²)	# of Panels	Panel Watts	Total (kW)
Roof	3181	80%	2544.8	1415	240	340
Parking	3180	50%	1590.0	884	265	234
TOTAL SYSTEM SIZE						574 kW

Buildings are outlined in **RED**. Parking lots are outlined in **BLUE**.

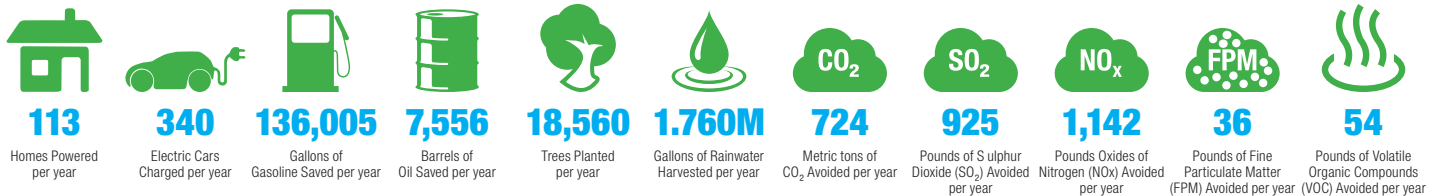
PROJECT SUMMARY

Prince Jonah Kuhio Elementary, to be found in central-east Honolulu, is a primary school serving the diverse communities of this more heavily urbanized part of the city. It is located in Mōiili, one of the original districts of old Honolulu, and now home to several large apartment blocks serves, as well as the prestigious East-West center. The school admits a total of 325 students on average, with 20 teachers providing primary education to students from Kindergarten to Fifth Grade.

The school reflects the diversity of social and cultural groupings in the local community, and emphasizes the importance of musical and artistic endeavors in bringing cultures together. The school site is venerable, with the first educational facilities dating back to 1884.

With the available roof-space from the school's building facilities and car parking, the school could harvest **1,760,049 gallons of rainwater** per year, with an overall solar system size for the site estimated at **574 kW**.

This would generate **906,700 kWh** of clean solar energy annually, with a net value of **\$199,474**. This energy generated on-site would be equivalent to having:



WAIKIKI AHUPUA'A

CONTACT US

Contact.Us@rpdelio.com
855 RPDELIO
(855) 773-3546

SOUTH PACIFIC MAILING ADDRESS

1050 Bishop Street
Suite 351
Honolulu, Hawaii, USA 96813

NORTHEAST USA MAILING ADDRESS

9 Reservoir Street
Bethel, CT 06801

