

STAGE 2 DEVELOPMENT ASSESSMENT

KOHALA HIGH SCHOOL 54-3611 AKONI PULE HWY KAPAAU, HAWAII, HI 96755



Description	Estimated Area (m²)	Scaling Factor	Useable Area (m²)	# of Panels	Panel Watts	Total (kW)
Roof	8755	80%	7004.0	3895	240	935
Parking	4608	50%	2304.0	1281	265	339
TOTAL SYSTEM SIZE						1,274 kW

Buildings are outlined in **RED**. Parking lots are outlined in **BLUE**.

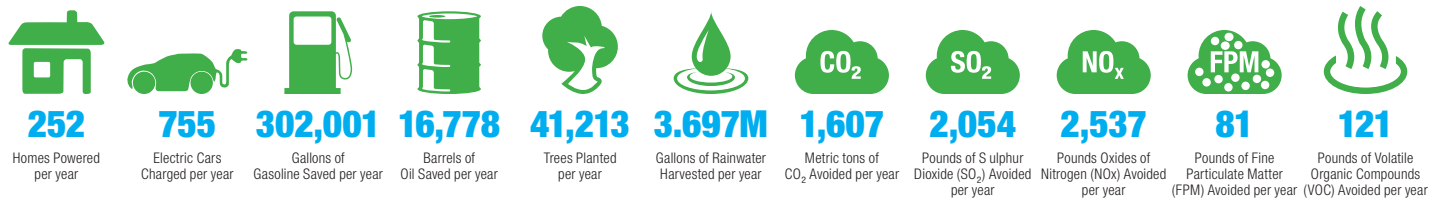
PROJECT SUMMARY

Kohala High School is one of ten high schools to be found on Big Island, located on the far north coast in the town of Kapaa. It is small school, serving Kapaa itself, and the largely rural communities scattered across the Kohala mountains. The school's intake numbers 270 on average, covering Grades 9 to 12, with 23 teachers providing their secondary education.

The school's motto is '*E ala e na paniola*' (rise to the challenge, cowboys!), with Kohala often referred to as Cowboy Country. The school began in 1926, to educate children from the North Kohala Coastal Sugar Cane Communities; most of today's buildings were constructed in the 1960s. It has been fully separate from the Elementary and Middle schools since 2001.

With the available roof-space from the school's building facilities and car parking, the school could harvest **3,697,459 gallons of rainwater** per year, with an overall solar system size for the site estimated at **1,274 kW**.

This would generate **2,013,339 kWh** of clean solar energy annually, with a net value of **\$442,934**. This energy generated on-site would be equivalent to having:



KAPAAU AHUPUA'A

CONTACT US

Contact.Us@rpdelio.com
855 RPDELIO
(855) 773-3546

SOUTH PACIFIC MAILING ADDRESS

1050 Bishop Street
Suite 351
Honolulu, Hawaii, USA 96813

NORTHEAST USA MAILING ADDRESS

9 Reservoir Street
Bethel, CT 06801

