

ALIAMANU ELEMENTARY & MIDDLE SCHOOLS & LIBRARY

3265-3271 SALT LAKE BOULEVARD, HONOLULU, OAHU, HI 96818

Description	Estimated Area (m ²)	Scaling Factor	Useable Area (m ²)	# of Panels	Panel Watts	Total (kW)
Roof (Elem)	8400	80%	6720	3737	240W	897
Roof (MS)	7250	80%	5800	3225	240W	774
Roof (Library)	2200	80%	1760	979	240W	235
Parking (Schools)	2800	50%	1400	779	265W	206
Parking (Library)	3500	50%	1750	973	265W	258
TOTAL SYSTEM SIZE						2370 kW

Buildings are outlined in **RED**. Parking lots are outlined in **BLUE**.

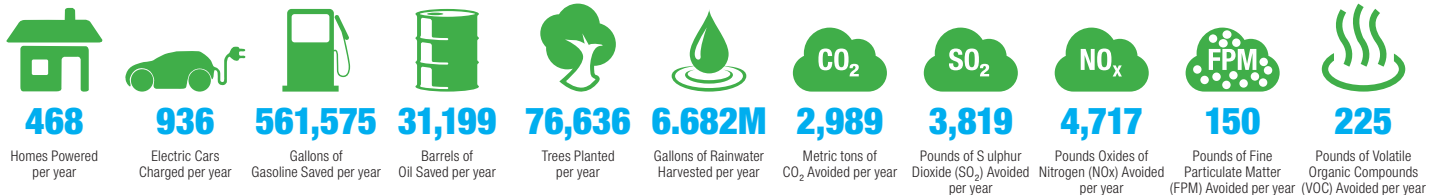
PROJECT SUMMARY

Aliamanu Elementary is a Honolulu school that serves the Aliamanu-Salt Lakes-Foster Village community from its facilities located on Salt Lake Boulevard. The school is home to between 800 and 900 students, and 54 teachers, who look after the primary education of students from Kindergarten to Grade 6.

The student intake is drawn heavily from the nearby military community, with nearly three-quarters of students coming from military families (housed at Halsey Terrace, Radford Terrace, Doris Miller, Maloelap and Moanalua Terrace). The school moved onto the present site in 1958, a year after the school was inaugurated.

With the available roof-space from the school's building facilities and car parking, the school could harvest **6,682,155 gallons of rainwater** per year, with an overall solar system size for the site estimated at **2370 kW**.

This would generate **3,743,830 kWh** of clean solar energy annually, with a net value of **\$823,853**. This energy generated on-site would be equivalent to having:



MOANALUA AHUPUA'A

CONTACT US

Contact.Us@rpdelio.com
855 RPDELIO
(855) 773-3546

SOUTH PACIFIC MAILING ADDRESS

1050 Bishop Street
Suite 351
Honolulu, Hawaii, USA 96813

NORTHEAST USA MAILING ADDRESS

9 Reservoir Street
Bethel, CT 06801

