

STAGE 2 DEVELOPMENT ASSESSMENT

AIKAHI ELEMENTARY SCHOOL 281 ILIHAU STREET, OAHU, KAILUA, HI 96734



Description	Estimated Area (m ²)	Scaling Factor	Useable Area (m ²)	# of Panels	Panel Watts	Total (kW)
Roof	5500	80%	4400	2447	240W	587
Parking	1500	50%	750	417	265W	111
TOTAL SYSTEM SIZE						698 kW

Buildings are outlined in **RED**. Parking lots are outlined in **BLUE**.

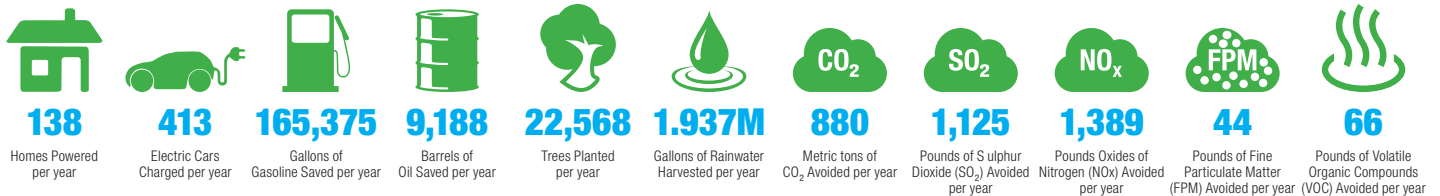
PROJECT SUMMARY

Aikahi Elementary is a primary school located in Kailua, on the Windward coast of Oahu, serving residents and military families in the Kaneohe Bay and northern Kailua areas. The school has had an intake of around 500 students in recent years, with 30 teachers meeting the primary educational needs of students from Kindergarten to Grade 6.

The student population has a significant proportion of children from military backgrounds, thanks to the proximity to Marine Corps Base Hawaii, at Kaneohe Bay. The school's facilities date back to 1960, when Aikahi Elementary school was first established.

With the available roof-space from the school's building facilities and car parking, the school could harvest **1,936,857 gallons of rainwater** per year, with an overall solar system size for the site is estimated at **698 kW**:

This would generate **1,102,500 kWh** of clean solar energy annually, with a net value of **\$242,550**. This energy generated on-site would be the equivalent, annually to



KANE'OHE AHUPUA'A

CONTACT US

Contact.Us@rpdelio.com
855 RPDELIO
(855) 773-3546

SOUTH PACIFIC MAILING ADDRESS

1050 Bishop Street
Suite 351
Honolulu, Hawaii, USA 96813

NORTHEAST USA MAILING ADDRESS

9 Reservoir Street
Bethel, CT 06801

