

STAGE 2 DEVELOPMENT ASSESSMENT



WAIMEA HIGH SCHOOL 9707 TSUCHIYA ROAD, WAIMEA, KAUAI, HI 96796

Description	Estimated Area (m ²)	Scaling Factor	Useable Area (m ²)	# of Panels	Panel Watts	Total (kW)
Roof	9546	80%	7636.8	4246	240	1019
Parking	2705	50%	1352.5	752	265	199
TOTAL SYSTEM SIZE						1218 kW

Buildings are outlined in **RED**. Parking lots are outlined in **BLUE**.

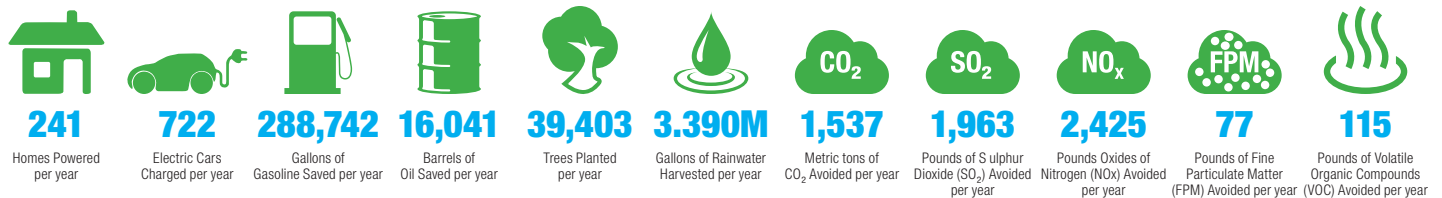
PROJECT SUMMARY

Waimea High is one of Kauai's three high schools, lying in the town of Waimea on the south-western coast of that island. It serves a large part of the rural community on Kauai, from Kalaheo in the east to Kekaha in the west. The school has an average intake of around 700 students, employing 44 full-time teachers to look to the secondary education of Grades 9 through to 12.

The student intake comes from the local rural communities, as well as from families attached to the nearby Pacific Missile Range Facility. The school was founded in 1882, expanding to become a high school in 1935. The present facilities, totaling 23 buildings in all, date back to 1977.

With the available roof-space from the school's building facilities and car parking, the school could harvest **3,389,776 gallons of rainwater** per year, with an overall solar system size for the site estimated at **1,218 kW**.

This would generate **1,924,946 kWh** of clean solar energy annually, with a net value of **\$423,488**. This energy generated on-site would be equivalent to having:



WAIMEA AHUPUA'A

CONTACT US

Contact.Us@rpdelio.com
855 RPDELIO
(855) 773-3546

SOUTH PACIFIC MAILING ADDRESS

1050 Bishop Street
Suite 351
Honolulu, Hawaii, USA 96813

NORTHEAST USA MAILING ADDRESS

9 Reservoir Street
Bethel, CT 06801

