

STAGE 2 DEVELOPMENT ASSESSMENT

ALA WAI ELEMENTARY SCHOOL 503 KAMOKU STREET, HONOLULU, OAHU, HI 96826



Description	Estimated Area (m²)	Scaling Factor	Useable Area (m²)	# of Panels	Panel Watts	Total (kW)
Roof	4700	80%	3760	2091	240W	502
Parking	1200	50%	600	334	265W	89
TOTAL SYSTEM SIZE						590 kW

Buildings are outlined in **RED**. Parking lots are outlined in **BLUE**.

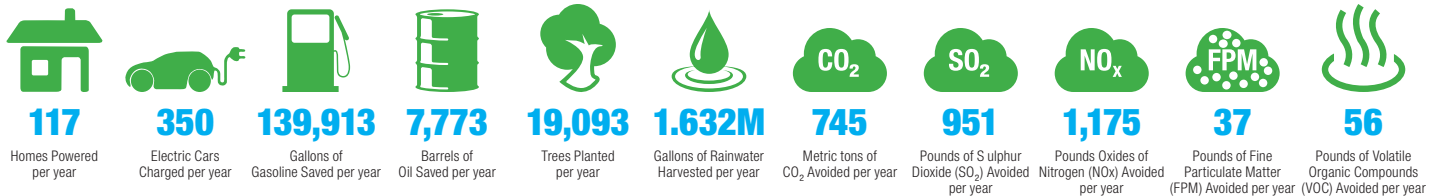
PROJECT SUMMARY

Ala Wai Elementary is a Honolulu primary school, sited in a sliver of open green space in urban Honolulu. It serves a diverse and dynamic population characteristic of the central city, and is a National Blue Ribbon School. The school has a head count of some 450 students, with 32 teachers catering to their primary educational needs, from Kindergarten to Grade 5.

The student population reflects the diversity of the local community, with equal proportions from Chinese, Hawaiian, Japanese, Filipino, Korean, Micronesian and White backgrounds. The school site was established in 1954, along the banks of the Ala Wai canal, and lies close to the University of Hawaii.

With the available roof-space from the school's building facilities and car parking, the school could harvest **1,632,493 gallons of rainwater** per year, with an overall solar system size for the site is estimated at **590 kW**:

This would generate **932,753 kWh** of clean solar energy annually, with a net value of **\$205,206**. This energy generated on-site would be the equivalent, annually, to:



WAIKIKI AHUPUA'A

CONTACT US

Contact.Us@rpdelio.com
855 RPDELIO
(855) 773-3546

SOUTH PACIFIC MAILING ADDRESS

1050 Bishop Street
Suite 351
Honolulu, Hawaii, USA 96813

NORTHEAST USA MAILING ADDRESS

9 Reservoir Street
Bethel, CT 06801

