

# STAGE 2 DEVELOPMENT ASSESSMENT

## AINA HAINA ELEMENTARY SCHOOL 801 W. HIND DRIVE, OAHU, HONOLULU, HI 96821



Description	Estimated Area (m <sup>2</sup> )	Scaling Factor	Useable Area (m <sup>2</sup> )	# of Panels	Panel Watts	Total (kW)
<b>Roof</b>	7000	80%	5600	3114	240W	747
<b>Parking</b>	3600	50%	1800	1001	265W	265
<b>TOTAL SYSTEM SIZE</b>						<b>1,013 kW</b>

Buildings are outlined in **RED**. Parking lots are outlined in **BLUE**.

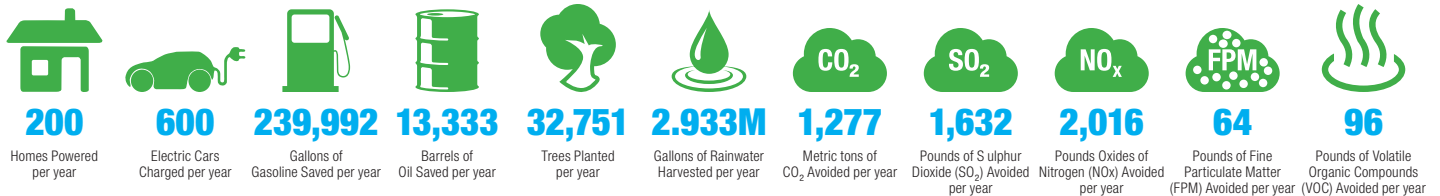
### PROJECT SUMMARY

Aina Haina Elementary is an East Honolulu school, serving residents living along the eastern coastal strip, from Waialae Iki to Kuliouou, from facilities located close to the foothills of the Ko'olau Mountain Range. The school is home to around 650 students, and 37 teachers, and looks to the primary educational needs of students from Kindergarten to Grade 5.

The student population is noted for its ethnic diversity, which is reflected in the provision of Japanese and Mandarin Language lessons since 2000, for all grades. The school has been at its present location since 1951, a year after the school was inaugurated in 1950.

With the available roof-space from the school's building facilities and car parking, the school could harvest **2,932,954 gallons of rainwater** per year, with an overall solar system size for the site is estimated at **1013 kW**:

This would generate **1,599,950 kWh** of clean solar energy annually, with a net value of **\$351,988**. This energy generated on-site would be the equivalent, annually to:



## WAIKIKI AHUPUA'A

### CONTACT US

Contact.Us@rpdelio.com  
855 RPDELIO  
(855) 773-3546

### SOUTH PACIFIC MAILING ADDRESS

1050 Bishop Street  
Suite 351  
Honolulu, Hawaii, USA 96813

### NORTHEAST USA MAILING ADDRESS

9 Reservoir Street  
Bethel, CT 06801

